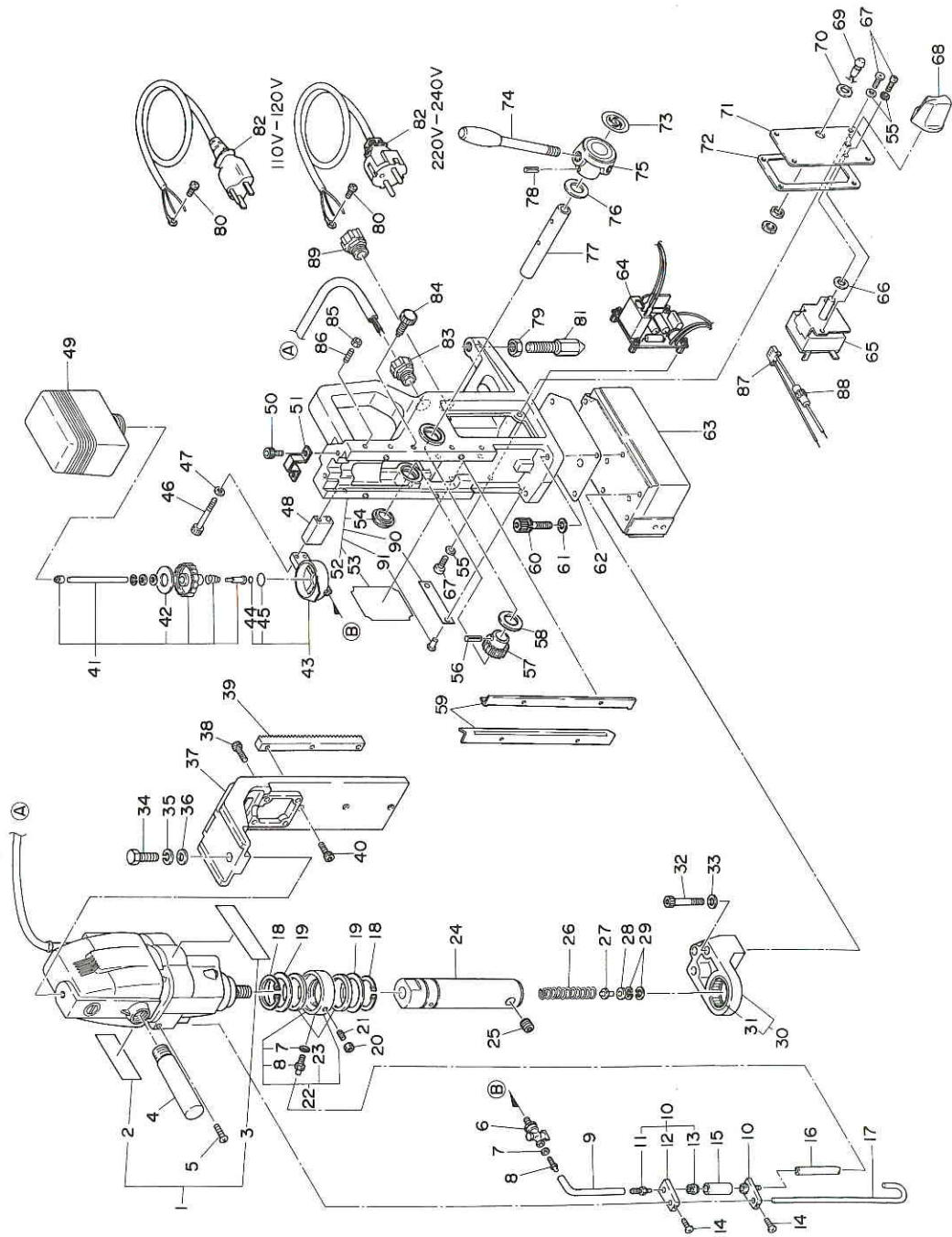


**ATRA ACE AS-50 ASSEMBLY AND PARTS LIST**



The part numbers with ( ) are included in the Assy parts written above them.

| No. | Part No.  | Part Name                                 | Q'ty  | Price |
|-----|-----------|---|-------|-------|
| 1   | TB03041   | Drill Motor Assy A (110-120V)             | 1 set |       |
| 1   | TB02629   | Drill Motor Assy A (220-240V)             | 1 set |       |
| -   | (TA9A028) | Carbon Brush Assy                         | 1 set |       |
| 2   | (TQ05281) | Label Drill rpm                           | 1     |       |
| 3   | (TQ05063) | Label Lubrication                         | 1     |       |
| 4   | TB02534   | Side Handle Assy                          | 1 set |       |
| 5   | TP02638   | Pan Head Screw 4X12                       | 1     |       |
| 6   | TP14495   | Two Port Cock PT1/8                       | 1     |       |
| 7   | CP21947   | Packing S-4.7X8X0.8                       | 2     |       |
| 8   | TP14500   | Hose Nipple                               | 2     |       |
| 9   | TB01098   | Tube 4X7X3000 Assy (190mm)                | 1 set |       |
| 10  | TA99504   | Oil Dropper Plate Assy                    | 2 set |       |
| 11  | (TP15816) | Dropper Nipple                            | 2     |       |
| 12  | (TP15817) | Dropper Plate                             | 2     |       |
| 13  | (TP15818) | Dropper Packing                           | 2     |       |
| 14  | TP02797   | Pan Head Screw 4X6                        | 2     |       |
| 15  | TP15819   | Dropper Pipe                              | 1     |       |
| 16  | TB01098   | Tube 4X7X3000 Assy (150mm)                | 1 set |       |
| 17  | TQ03397   | Oil Ring Stopper                          | 1     |       |
| 18  | TP14969   | External Retaining Ring ISTW-38           | 2     |       |
| 19  | TP12773   | Washer 38.5X54X1                          | 2     |       |
| 20  | LP10496   | Hex. Nut M6                               | 1     |       |
| 21  | TP15983   | Hex. Socket Set Screw With Cup Point 6X30 | 1     |       |
| 22  | TB00496   | Oil Ring Sub Assy                         | 1 set |       |
| 23  | (TP14499) | Oil Seal GD 38X48X4                       | 2     |       |
| 24  | TP17335   | Arbor Body 50                             | 1     |       |
| 25  | TP16723   | Hex. Socket Head Set Screw 12X9.5         | 1     |       |
| 26  | TP15998   | Spring 1.6X16.2X120                       | 1     |       |
| 27  | TP15981   | Pilot Spacer                              | 1     |       |
| 28  | TP15848   | Spacer 10.5X19X5                          | 1     |       |
| 29  | TP13905   | Internal Retaining Ring RTW-19            | 2     |       |
| 30  | TB02695   | Bracket Assy                              | 1 set |       |
| 31  | (TQ03444) | Needle Bearing                            | 1     |       |
| 32  | TP13332   | Hex. Socket Head Cap Screw 8X50           | 3     |       |
| 33  | TP05049   | Spring Washer M8                          | 3     |       |

| No. | Part No.  | Part Name  | Q'ty  | Price |
|-----|-----------|--|-------|-------|
| 34  | TP12782   | Hex. Head Bolt 10X35                               | 1     |       |
| 35  | TP06226   | Spring Washer M10                                  | 1     |       |
| 36  | TP07225   | Washer M10   | 1     |       |
| 37  | TQ03119   | Slide Board  | 1     |       |
| 38  | TP06637   | Hex. Socket Head Cap Screw 5X40                    | 4     |       |
| 39  | TP12776   | Rack   | 1     |       |
| 40  | TP02863   | Hex. Socket Head Cap Screw 5X20                    | 3     |       |
| 41  | TB00516   | Cap Assy   | 1 set |       |
| 42  | (TQ00701) | Packing Cap  | 1     |       |
| 43  | TB01380   | Oil Tank Bracket Sub Assy                          | 1 set |       |
| 44  | (TP11994) | O-Ring P-4   | 1     |       |
| 45  | (CP20180) | O-Ring P-18  | 1     |       |
| 46  | TP05903   | Hex. Socket Head Cap Screw 6X60                    | 2     |       |
| 47  | TP00092   | Washer M6  | 2     |       |
| 48  | TQ03318   | Spacer Tank Bracket                                | 1     |       |
| 49  | TQ00702   | Oil Tank   | 1     |       |
| 50  | TP06342   | Hex. Socket Head Cap Screw 4X10                    | 2     |       |
| 51  | TP16013   | Rack Stopper BA                                    | 1     |       |
| 52  | TB04418   | Body Sub Assy                                      | 1 set |       |
| 53  | (TQ05807) | Plate Warning                                      | 1     |       |
| 54  | (TP12764) | Cap  | 1     |       |
| 90  | (TP04769) | Plate Serial Number                                | 1     |       |
| 91  | (TP05136) | Drive Rivet No.2X4.8                               | 2     |       |
| 55  | TQ00258   | Seal Washer M4                                     | 10    |       |
| 56  | TP13891   | Spring Pin 5X38 AW Double                          | 1     |       |
| 57  | TP00009   | Pinion   | 1     |       |
| 58  | TP03910   | Washer M20   | 1     |       |
| 59  | TP12777   | Slide Plate  | 2     |       |
| 60  | TQ03345   | Hex. Socket Head Cap Screw 8X25 With Spring Washer | 4     |       |
| 61  | TP00046   | Washer M8  | 4     |       |
| 62  | TQ03124   | Packing Pole                                       | 1     |       |
| 63  | TA99708   | Square Pole Assy (110-120V)                        | 1 set |       |
| 63  | TB02603   | Square Pole Assy (220-240V)                        | 1 set |       |
| 64  | TB02619   | Control Board Assy (110-120V)                      | 1 set |       |
| 64  | TB02580   | Control Board Assy (220-240V)                      | 1 set |       |
| 65  | TB02579   | Switch Assy  | 1 set |       |

| No. | Part No.  | Part Name                                 | Q'ty  | Price |
|-----|-----------|---|-------|-------|
| 66  | TQ01331   | Seal Washer M6                            | 1     |       |
| 67  | TP02618   | Pan Head Screw 4X8                        | 10    |       |
| 68  | TP12781   | Knob MY-30                                | 1     |       |
| 69  | TB02405   | Lamp Assy                                 | 1 set |       |
| 70  | TQ03130   | Seal Washer M8                            | 1     |       |
| 71  | TQ04449   | Circuit Board (110-120V)                  | 1     |       |
| 71  | TQ03404   | Circuit Board (220-240V)                  | 1     |       |
| 72  | TQ03123   | Packing Body                              | 1     |       |
| 73  | TP02573   | Plate Nitto                               | 1     |       |
| 74  | TP00118   | Rod Handle                                | 3     |       |
| 75  | TP02572   | Handle Stern                              | 1     |       |
| 76  | TP12766   | Washer 20.5X34X1                          | 1     |       |
| 77  | TP12765   | Pinion Shaft                              | 1     |       |
| 78  | TP09853   | Spring Pin 5X34 AW Double                 | 1     |       |
| 79  | TP03914   | Hex. Nut M16                              | 1     |       |
| 80  | LP08489   | Binding Head Screw 4X6                    | 1     |       |
| 81  | TQ00720   | Stabilizer Shaft                          | 1     |       |
| 82  | TA9A757   | Cable Cord Assy (110-120V)                | 1 set |       |
| 82  | TB01286   | Cable Cord Assy (220-240V)                | 1 set |       |
| 83  | TP13889   | Cable Connector SC4-3                     | 1     |       |
| 84  | TP02931   | Setscrew                                  | 1     |       |
| 85  | TP02936   | Hex. Nut M5                               | 4     |       |
| 86  | TP02937   | Hex. Socket Set Screw with Cup Point 5X20 | 4     |       |
| 87  | TB02459   | Cord Assy with Fuse                       | 1 set |       |
| 88  | (TQ03229) | Fuse 2A 250V                              | 1     |       |
| 89  | TP13889   | Cable Connector SC4-3(110-120V)           | 1     |       |
| 89  | TQ01838   | Cable Connector SC4-1(220-240V)           | 1     |       |

**ACCESSORIES**

| No. | Part No. | Part Name                 | Q'ty  | Price |
|-----|----------|---------------------------|-------|-------|
|     | TP04305  | Hex. Socket Screw Key 2.5 | 1     |       |
|     | TP01939  | Hex. Socket Screw Key 4   | 1     |       |
|     | TP00170  | Hex. Socket Screw Key 6   | 1     |       |
|     | TP14091  | Spanner 7X8               | 1     |       |
|     | TJ15859  | Pilot Pin 08035 (A2)      | 1     |       |
|     | TJ16019  | Pilot Pin 08050 (A3)      | 1     |       |
|     | TA99027  | Chain Assy                | 1 set |       |
|     | TB02145  | Cutting Oil 0.5 (Assy)    | 1 set |       |
|     | TP10198  | Tool Box 285X125X62       | 1     |       |
|     | TQ03400  | Label Combination         | 1     |       |
|     | TQ05809  | Insurrection Manual       | 1     |       |